

THE TREASURE CHEST

NEWSLETTER OF THE NORTH JERSEY
MINERALOGICAL SOCIETY, INC.

Charter Member of The Eastern Federation of Mineralocal & Lapidary Societies
and affiliated with The American Federation of Mineralogical Societies

VOLUME 65, ISSUE 4

THURSDAY, APR. 9, 2009

654th MEETING

Time..... Social—Mineral Sales.....6:30PM
Meeting.....7:30PM
Program.....8:00PM-9:00PM
When..... Thursday, April 9, 2009
Where.... The Paterson Museum — (phone 973-321-1260)
2 Market Street, Paterson, NJ 07501-1704
Editor:..... Jack R. Troy, 48 Beverly Rd., Hawthorne, NJ 07506
973-423-5225 — e-mail: troy39@optonline.net

DIRECTIONS

For those unsure of a route to the museum, these directions should help. You can get to the museum via Rt. 80 using exit 57a,b or Rt. 19 north, following the signs to downtown Paterson. Left at the first light, (follow red dots) left again at the next light (Market St.) and then two and a half blocks to the museum on your left. You could also come north on McBride Ave. from Rt 46 in West Paterson to Overlook Park, right at light to next light, left at Burger King and 100 ft. to museum entrance on your right. A winding but safe route to a paved, fenced and well lit parking lot.

PURPOSE

The North Jersey Mineralogical Soc. is a non-profit, educational organization founded in 1945 whose goal is to bring together people with an interest in the Earth Sciences in general and mineral studies in particular. Guests and prospective members are always welcome. Young people under 17 years of age are welcome to attend if accompanied by a parent or adult friend.

FOR INFORMATION CALL

Rolf Schudel (201-925-2716) or Mel Pollinger (201-791-9826). Call the the museum or one of the officers if inclement weather might cause meeting cancelation.

EDITOR'S COMMENT

YOUR DUES ARE DUE. If you haven't paid your dues by the conclusion of our annual show, you will be dropped from our newsletter mailing list and will not be eligible for any club functions or other benefits.

SEND DUES TO

Juan Gonzalez
79 Lakeside Avenue
Pompton Lks, NJ 07442
973-405-1480
Individual members: \$12.00
Married couples \$18.00
Additional family members
are \$6.00 each
Junior members: \$5.00

OFFICERS FOR 2008

President.....Robert Horn
1st VP.....Rolf Schudel
2nd VP.....Steve Barry
Secretary.....Arlene Castleman
Treasurer.....Juan Gonzalez
Assoc. Treas.....Arlene Castleman
3 yr trustee.....Judy Baglio
2 yr Trustee.....Rolf Schudel
1 yr Trustee.....Mel Pollinger

PROGRAM

Our club is planning two field trips to the "Big Brook" area and to properly prepare for those trips we have invited Derek Yoost to speak at our next meeting. His presentation is called, "Big Brook — The stream of Possibilities."

Derek will inform the club about current rules and regulations when collecting down at Big Brook. He will also give us tips on what sort of gear to wear and what sort of tools to use. I know that I need to make a new sifting screen. Derek will also be able to show club members what fossils to look for. For those members that have never been to the "Big Brook area", this lecture should be very helpful.

PRESIDENT'S MESSAGE

Thanks to everyone who participated in our annual show. It takes teamwork to put on a good show and this certainly was one of our best shows ever. Everyone should be proud of themselves. Once we started setting up tables, everything went like clockwork. I was shocked on how fast the electrical went up. We did not have one blown fuse during the show. There was plenty of help unloading food items from the cars. Our buffet for dealers and club members went fine. Nothing but compliments about the food. All dealers showed up and were able to set up on time. Juan's new signs on Valley Road were outstanding and attracted many new customers. We had plenty of grab bags at the front door for kids. Mike Machette went nuts on grab bags this year! Everett Conklin did an out standing job calling out door prizes this year. There seemed to be a winner every time he called out a number. We had plenty of help at the front door and took turns. It was fun hanging out at the front table. Chris Laskowich ran a last minute field trip to the Quarry across the street and showed people the zone where dinosaur tracks could be found. Several of us ran out to Ron Schutz's car to view his find of a large plate with small prints on it. Ron is new to the club and he did an outstanding job helping out. Greta told me that Pat Galimberti was a great help in the food area. Attendance at the show was down slightly but the parking lot was full all day and proceeds at the front door were up. There were no reports of theft which makes me extremely happy. We had plenty of help breaking down on Sunday night. This show seems to unite the club and we had members from all over come to help out. Our objective is to promote the hobby and we did that with our annual show. I believe we all had fun!
Thanks! Bob Horn

THE CLIFTON SHOW FOR 2009

Our 20th Annual Gem and Mineral Show was held on the 14-15th of March and the weather was good. There was some concern that because the economy was slow, the show would be slow as well but although the attendance did not break records, there was a good crowd all day on Saturday and lighter on Sunday. The people involved with the show thought that it was a good show. Sometimes a weak economy works well for shows like ours. There is a large housing development being built across the street from the school for the past several months. Recently, construction has been on hold because of poor sales and that left the fossil track area available for us collectors. I heard that a few of the people attending the show were lured into the quarry area to see what could be found. The supply of dino foot prints seems to be endless. Chris has been finding good



footprints for the past several months. (And documenting them with good photos). In addition to the fossil footprints, there have been several minerals found that are not common. In fact, some of the guys are

having the mineral identification checked to be sure of what they have found. As you can see in the photo to the right, they are not small. Sometimes they are clean and sharp. The photo below left shows the crowd on Saturday, which seemed to stay steady all day long. For us that is a nice showing. Part of the

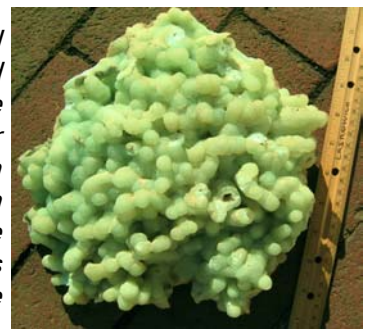


reason I like this show is that it is the show where you are most likely to find a good New Jersey minerals at a



reasonable price to add to your collection. I almost always find something to add to my collection. You have to look closely, but they are there, from rare minerals to locality pieces.

There was a mineral locality that was opened up a few years ago while constructing a sewer pumping station on McBride Avenue down in West Paterson. Some very fine prehnite was collected there, this piece by Chris Laskowitch.



Below left is a chunk of native copper that came from the Chimney Rock Quarry in Bridgewater Township, NJ. The copper was concentrated in the southeast corner of the quarry and then showed up further south, on the other side of the mountain, still in Bridgewater at a locality called "The American Mine". It is



being held by one of our dealers, Kurt Hennig. Another area that would produce an occasional mineral specimen is Lambertville. Some very nice, but small crystals of some of the zeolite family of minerals showed up here. The Paterson museum had in it's collection some really fine prehnite

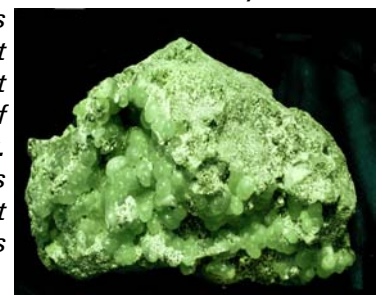


crystal specimens. The stilbite shown below left is another locality piece, this one from Moore's Station.



Moore's Station is near the Lambertville Quarries and was known for producing nice specimens some years ago. Again, it's rare to find specimens this good from a locality that has produced so little in the past several years. The

specimen below right is prehnite from the Route 80 road cut through Fort Lee which was mostly done in the early 1960's. This is the finest and largest specimen of prehnite that I've seen that came out of the Fort Lee road work. That locality was famous for micromounts, not hand specimens. It was priced at \$500.



In addition to the many local mineral featured at our show, there was also a good mix of world wide specimens being offered. The rubellite at the right from Pakistan was not a super high quality piece, but it had



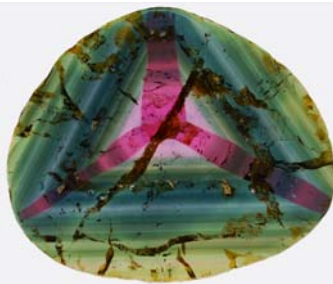
a nice esthetic arrangement of crystals. Below is a fine scheelite from China. I always considered this to be a somewhat rare mineral, but in recent years there has always been a nice piece available to consider.



Below right there were a selection of tourmaline slices that were very attractive. Technically they are liddicoatite. From Madagascar, the price depended on the

quality. Remember, these are gems. This one was offered at a price of \$1450. These pinkish tourmaline specimens have been available for a number of years

from several sources (including Ward's Scientific Supply in Rochester, NY). Below left is a nice aquamarine specimen from the Shigar Valley, Pakistan. It was priced at \$375.00. I thought it was quite nice for the



price. Continuing down the page is a nice agate from the Atlas Mountains in Morocco being offered by



Rocko. He had quite a nice selection of some reasonably priced polished specimens. He expects to have more coming in over the near future. Some of the pieces had nice patterns while others were more like a typical geode,

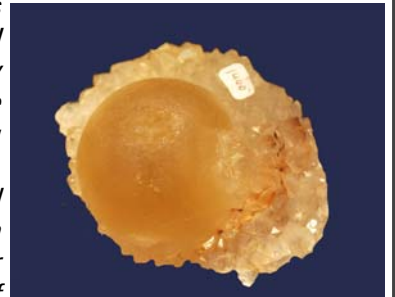
with a drusy quartz center and size range of 2 to 4 inches. This is worth following up over the coming months. You have to keep alert to all the possibilities that some locality will produce interesting mineral specimens. I do with the dealers from India. The range and variety continues to surprise.



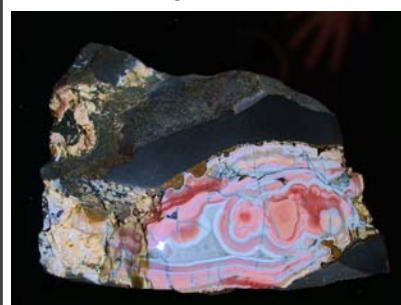
Our dealer from Canada has a mix of minerals including some from India. This esthetic piece of apophyllite / scolecite was about 4 inches across and was priced at \$275.00. Not bad for the quality. Our dealer from

India had a few pieces of fluorite that were large for the mineral and were all priced in the same range. The one below right was

marker at \$1,400.00. I couldn't resist a really nice stilbite 4" bow-tie nestled next to a 4" long crystal of apophyllite..... very nice. As I said before, the major reason you should come to our show is the availability of



really nice New Jersey mineral specimens. The next two specimens are, at left, a good agate from Paterson and below right, a classic pectolite from the Millington



Quarry, in Bernards Township. I haven't seen anyone try to make a cabochon from this material, because it really should cut and polish without any major problems.

We have a good mineral show and have tried to make it as good as we could. The mix of minerals is good and varies from year to year. With some luck, we will have many more good shows. I don't put many people

pictures in the report, but once in a while I do. This year we had some people retire from the job they did to help our show and other and younger members jumped in to help.



Thanks to all!!!!.. I had a lot of photographs to chose from, far more that I could possibly use. Thanks to



Mickey & Elaine, Ron Schulz, Jack Troy, Chris Laskowich, and Arlene Castleman. All good photographers. At left is our show take down crew. We couldn't do it without these guys.

THE PEOPLE OF THE 2009 CLIFTON SHOW



Each year I ask our members to take photographs at our shows and field trips. This year we had some very good photos submitted by Mickey Raine, Ron Schulz, Arlene Castleman, Chris Laskowitz and Jack Troy and they were all good. There were so many good ones that I thought I would add this collage.....enjoy.

FIELD TRIPS

April 4th, 2009 - Burkholder Quarry - 621 Martindale Road, Ephrata, PA We have 15 slots open for this trip. This quarry is known for Calcite & Fluorite crystals.

Contact Juan Gonzalez @ hnradvtr@msn.com or 973-405-1480 Full gear needed including hard hat, boots

May 10th, 2009 - Ramanessin Brook - "Big Brook Area" Holmdel, NJ Mike Machette will be leading this field trip and we will be meeting at a rest stop just south of the Raritan Bridge. Contact Mike Machette at michael.machette@fmglobal.com or 973-537-0274 Fossil collecting in and around a brook.

June 6th, 2009 - Ramanessin Brook - "Big Brook Area" Holmdel, NJ Mike Machette will be leading this field trip and we will be meeting at a rest stop just south of the Raritan Bridge. Contact Mike Machette at michael.machette@fmglobal.com or 973-537-0274. Fossil collecting in and around a brook.

COMING EVENTS

Apr 25-26--Franklin, NJ: 37th Annual Show and Swap; New Jersey Earth Science Assoc., Franklin School, 50 Washington Ave.; Sat. 9-5:30, Sun. 9-5; adults \$5, children under 14 free with paying adult; contact Sterling Hill Mineral Museum, 973-209-7212

May 2-3--Pittston, PA: Show, Treasures Of The Earth Gem Show"; Mineralogical Society of Northeastern Pennsylvania; Oblates of St Joseph, 1880 Hwy. 315; Sat. 10-5, Sun. 10-4; adults \$3, children free; UV display, door prizes, minerals, fossils, crystals, gems, meteorites, jewelry, beads, contact Jos. Savokinas Pittston, PA 18640, 570-883-2784; \

May 2-3--Topsfield, MA: 46th Annual Retail/Wholesale show; North Shore Rock & Mineral Club; Topsfield Fairgrounds, Coolidge Hall & Trade Bldg., Rte. 1 N.; Sat. 9-5, Sun. 10-4; adults \$5, seniors \$3, children under 12 free; dealers, faceting and polishing demonstrations, discount coupon on Web site; contact Joe Weisberg, 781- 861-6653; e-mail: mw29@verizon.net; Web: www.nahant.com/nsrmc/

May 9-11--Henrietta (ROCHESTER), NY: Show; Gem Street USA; Monroe Country Fairgrounds, 2695 E. Henrietta Rd.; Fri. 10-6, Sat. 10-6, Sun. 11-5; adults \$7, seniors (60+) and students (12-17) \$5, under 12 free, ticket good all weekend; fine gems, jewelry, mineral specimens, fossils, beads, findings, Scout badges, discount coupon on Web site; contact Jane Strieter Smith, (216) 521-GEMS (4367); e-mail: spi@stratos.net; Web site: www.gemstreetusa.com

May 16-17--Leesport, PA: 41st Annual Show, "World of Gems and Minerals"; Berks Mineralogical Society; Leesport Farmers Market Banquet Hall, Rte. 61; Sat. 10-5, Sun. 10-4; contact Jim Woodeshick, 246 State St., Hamburg, PA 19526; e-mail: brwoodpile@yahoo.com

May 16-17--ORANGE, CT: 36th annual show; The New Haven Mineral Club; Amity Reg. Jr. High School, Sheffield Rd., off Rte. 34; Sat. 9:30-5, Sun. 9:30-5;