

THE TREASURE CHEST

NEWSLETTER OF THE NORTH JERSEY
MINERALOGICAL SOCIETY, INC.

Charter Member of The Eastern Federation of Mineralogical & Lapidary Societies
and affiliated with The American Federation of Mineralogical Societies

VOLUME 65, ISSUE 4

THURSDAY, OCT. 8, 2009

658th MEETING

Time..... Social—Mineral Sales.....6:30PM
Meeting.....7:30PM
Program.....8:00PM-9:00PM
When..... Thursday, Oct. 8, 2009
Where.... The Paterson Museum — (phone 973-321-1260)
2 Market Street, Paterson, NJ 07501-1704
Editor:.... Jack R. Troy, 48 Beverly Rd., Hawthorne, NJ 07506
973-423-5225 — e-mail: troy39@optonline.net

DIRECTIONS

For those unsure of a route to the museum, these directions should help. You can get to the museum via Rt. 80 using exit 57a,b or Rt. 19 north, following the signs to downtown Paterson. Left at the first light, (follow red dots) left again at the next light (Market St.) and then two and a half blocks to the museum on your left. You could also come north on McBride Ave. from Rt 46 in West Paterson to Overlook Park, right at light to next light, left at Burger King and 100 ft. to museum entrance on your right. A winding but safe route to a paved, fenced and well lit parking lot.

PURPOSE

The North Jersey Mineralogical Soc. is a non-profit, educational organization founded in 1945 whose goal is to bring together people with an interest in the Earth Sciences in general and mineral studies in particular. Guests and prospective members are always welcome. Young people under 17 years of age are welcome to attend if accompanied by a parent or adult friend.

FOR INFORMATION CALL

Rolf Schudel (201-925-2716) or Mel Pollinger (201-791-9826). Call the the museum or one of the officers if inclement weather might cause meeting cancelation.

EDITOR'S COMMENT

As we get near the end of the year, it's time to double check our mailing list to make sure we have eliminated any errors. We also need to update e-mail addresses if required. Help us by e-mailing any changes.

SEND DUES TO

Juan Gonzalez
79 Lakeside Avenue
Pompton Lks, NJ 07442
973-405-1480
Individual members: \$12.00
Married couples \$18.00
Additional family members
are \$6.00 each
Junior members: \$5.00

OFFICERS FOR 2009

President.....Robert Horn
1st VP.....Rolf Schudel
2nd VP.....Steve Barry
Secretary.....Arlene Castleman
Treasurer.....Juan Gonzalez
Assoc. Treas.....Arlene Castleman
3 yr trustee.....Judy Baglio
2 yr Trustee.....Rolf Schudel
1 yr Trustee.....Mel Pollinger

PROGRAM

Due to a last minute cancellation of our planned program, we will have a substitute program which will be announced at our meeting. Be sure to attend this wonderful program.

EXPLORING MICROMOUNTS

Over the years, our club has had active micromount mineral study groups. Recently, there has been talk of starting up another micro study group. I thought that it would make an interesting article to include some of minerals from the collections of George Megerle, Nick Facciolla and Jack Troy, that came from an appropriately named town called Little Rock. (Arkansas) The photographs in this article are approximately one mm across. In other words, the photos are very small. The specimens are from a locality called, "Granite Mountain". The location is not a granite, but is a nepheline syenite, similar to the Ste. Hilaire quarry in Quebec except that minerals seen there are much smaller. The photo above left is a nice spray of kupleskite in a vug from that syenite at the Granite Mountain quarry. At right is a nice titanite crystal, all of a half mm in height. The people who collected at this quarry were members of the Coon Creek gang or their guests. The photo at left is epidote. It occurs as single crystals or as clusters like the one shown in the photograph. Some of these crystals are so small that the only way to identify them is by using your eyesight or experience at the site.



epidote. It occurs as single crystals or as clusters like the one shown in the photograph. Some of these crystals are so small that the only way to identify them is by using your eyesight or experience at the site.

(Continued on page 2)

(MICROMOUNTS: CONTINUED FROM PG. 1)

Below left is a sharp biotite crystal. Some of these minerals are quite rare in the quarry. Typical of micro-



minerals, you have to look sharp to be able to spot them. Some of the minerals are difficult to identify with reasonable certainty. They are so small that your only way to identify is by your eyesight.

The mineral below right is one of those that I couldn't identify by eyesight alone. It was large enough to get a good picture. But

even with a good photo, I couldn't tell what it is. Probably if I had one of the local experts here, they would be able to tell what it is without a problem. And in a way, that is how I came up with a name. A paper written by Dr.



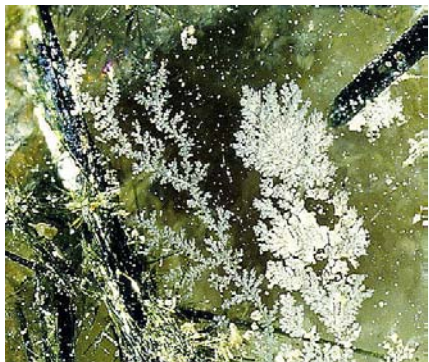
Henry Barwood showed a picture that was identical and named *helvite*. The specimen below left appears



to be a twin (showing a re-entrant angle on the prism face) but I'm not sure what to call this. The black color and bright surface should help, but I'm still at a loss for this one. The specimen below right is a dendrite.

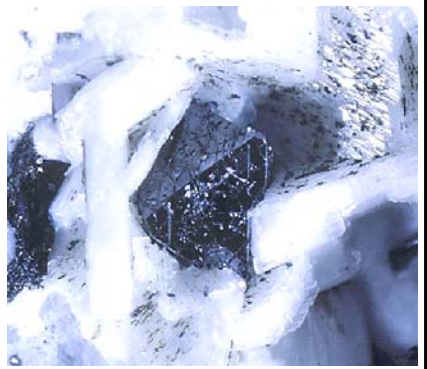
Normally black this is a little unusual and is probably a chlorite mineral. I could have played some tricks with my camera and switched to a negative print-out. It

would have made the dendrite appear to be black and the mineral background would have looked white. When I take photographs of micros, I try different angles and lighting and then pick what I think is best.



Some of the most difficult minerals to photograph are the black minerals. If you get enough light on the crystal to get a good photo, the light colored matrix

over powers the crystal itself. So you have to get a balance. The use of a white card for reflected light does work well. Other minerals that are difficult to photograph are the very small crystals. The orange colored specimen below left



is *labuntsovite*. Not very common at Granite Mountain. I could get the color just fine, but the shape did not show very well.



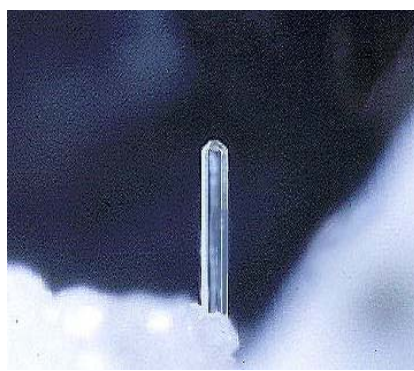
Another mineral that was difficult to find let alone photograph is *catapleite*. Sometimes these little crystal would be impaled on an *acmite* crystal, or as in the photo below right, as in nice clusters.

These crystals are less than 1mm in size, not like the crystals from Mt. St. Hilaire, which can get as large as 8cm across. The very small needles in the picture are more than likely *pectolite*. I was

tempted to put in a picture of one of the impaled crystals, but then decided to save that for another day. You have no idea of how many good photos I took of these micro minerals from Little Rock. Then take those pictures and



edit them down to a well balanced and esthetic shot. Sometimes the photo needed a little touch-up or clean-

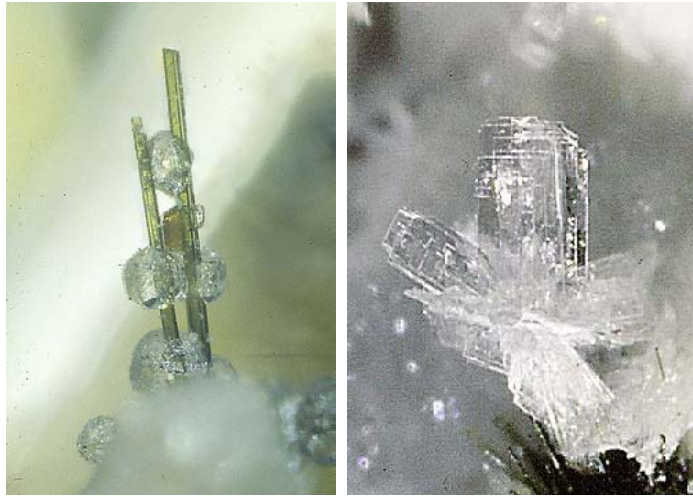


up. Dust shows as white specks and can be painted out. For a single crystal like the *apatite* at left, the prism face needed a little touch-up to make it look better. You have to take care to make the photo look its best.

(Cont. on page 3)

(MICROMOUNTS: CONTINUED FROM PAGE 2)

There are several zeolites that occur at Little Rock.



Although they are quite small, they are esthetic. Below left are some analcime crystals on acmite. At the right is a nice group of mesolite crystals. Sometimes the form is quite unique.



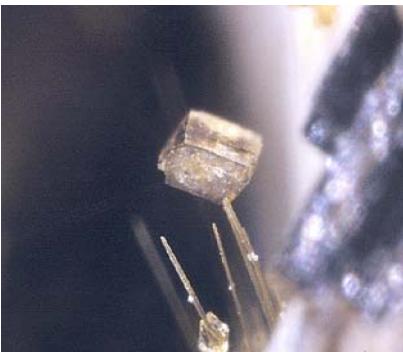
Below left is a group of natrolite crystals on a larger acmite crystal. Below right is a nice stilbite crystal with some nice pyrophanite crystals showing their natural reddist color. The stilbite

looks like it might have developed into a bow tie if nature had continued. Pyrophanite looks like a mica crystal in shape and form but not in color.

It's quite unique. I had a number of other photographs that I wanted to use, but there was simply not enough room. Maybe the next issue of our newsletter.



Meanwhile, think about working to get our micro-mineral study group up and running again.



It's a great way to learn about minerals and crystals. Also, try your hand at mineral photography, digital style. It's a new world for camera buffs. You can do all kinds of wonderful things with digital format. jrt

MINUTES OF THE SEPT. MEETING

The meeting was brought to order by our Pres. Bob Horn. Announcements: the Fanwood show has been moved to Oct. 17 this year. (See coming events this page) The treasures report was presented by Juan Gonzalez. There is \$17, 622.10 in the checking account and another thousand dollars in the Ford Account. We should think about transferring some of the money back into the Ford Account now that it is more secure.

The Clifton school where our show is held was closed and the property sold. As a result it might not be available for our next show on March 12-14. We need to secure an alternate location. One possibility discussed was the church next door - St. Philips which might not be available for Sunday. If we find a new location it should in or near Clifton for name recognition. The cost of the rental should not exceed \$4000.00 and should include a large room like a gymnasium and a room where we can hold our dinner on Friday night set up.

One of our members, Chris Laskowich, reported a large theft of his specimens during a sale to other dealers. Everyone should be careful separating their items that they wish to sell from the items that they wish to keep in their collections. Everyone should consider taking pictures of their collections to identify specimens and protect them for the future.

We all thanked our editor Jack Troy for publishing a wonderful newsletter!

New members David and Jarred Gill were welcomed. The club has a membership to the Sterling Hill Mining Museum allowing us to visit the mine. We have not yet scheduled a trip this year and should before the end of the year.

We need a new librarian.

Juan Gonzalez has single handedly been working on building and putting together the fluorescent display for the Paterson Museum over the last several months. The museum has not yet provided the glass for the cabinets and therefore the display cannot be finished. We have to work on this.

Many of our members brought in items for sale. Bob Horn displayed and spoke about the items he brought in to show us. A good time was had by all.

*Respectfully Submitted
Arlene Castelman, Sect.*

INNER PEACE

Dr. Phil proclaimed, "The way to achieve inner peace is to finish all the things you've started." So I looked around my house to see what I had not completed. Before leaving the house this morning, I finished off a bottle of Merlot, a bottle of Zinfandel, a bottle of Bailey's, a bottle of Kahlua, a package of Oreos, the remainder of both Prozac and Valium prescriptions, the rest of the cheesecake, some saltines and a box of chocolates. You have no idea how freaking good I feel.

OCTOBER FIELD TRIP FOR MEMBERS

For the following event, I need a Pre-Field-Trip Head Count!! Please leave a message on my cell at: 201-925- 2716, or email me at: Rolf_Schudel@yahoo.com.

No Reply means No Go! Please reply...

Who: We, the members and their families, and their friends, of The North Jersey Mineralogical Soc. .

What: Are having a BYO Picnic at The Sterling Hill Mining Museum (SHMM), in Ogdensburg, NJ.

When: On Sunday, October 11, 2009.

The schedule of events follows below:

9:00 AM or shortly thereafter, arrive and park at the SHMM parking lot.

9:30 AM Gather at the Front Porch, just outside the Cafe & Gift Shop.

10:00 AM Our 1st Annual, Magical fluorescent Mineral Tour begins!

We tour the Mining History Museum.

10:30 AM We go Underground - into the Adit (look it up) to learn the History of the Zinc Mining Operations at the SHM and in Ogdensburg, NJ.

11:30 AM We tour the Incredible, World-Wide Fluorescent Mineral Museum.

(keep your eyes peeled for items donated by or on loan from members and friends of The NoJMS!) (keep track - there will be a test on it later!).

12 Noon - The Picnic Begins, enjoy BYO picnic foods, or you can buy lunch at the Cafe!

12:30 PM or later, we can start Collecting on the Mine Run Dump until 3:30 PM.

(The usual \$5.00 collecting fee per person has been waived for our group, but the \$1.50 per pound collected Fee still applies to all Collectors in our group.)

Please remember that we (all of us) represent the No.J.M.S., so please listen to all instructions from our Hosts: Elna, Dick, and Bob Hauck, and their Staff, who are making every effort to offer us an Excellent Learning and Collecting Opportunity!

"Notice to Collectors: Please remember to bring: Hard Hats, Boots, Long Pants, Dress in Layers, October is Changeable Weather Season in Sussex County, N.J., Portable LW & SW UV Lamps, Old Blankets for "Lamping" your Finds!, Gloves, Goggles, Rock Hammers, Rock Sledge Hammers, Chisels, and Water to drink and Energy Foods to keep going until 3:30 pm - closing time."

Please Reply by 11:00 PM, Thursday Night, October 8, 2009, our regular meeting night at The Paterson Museum, #2 Market St., Paterson, NJ, just off Rt. 80, in the Historic District, to be counted and attend this event. Transportation is on your own - carpooling is recommended!

Rolf Schudel, Program Chairperson
The No.J.M.S. Cell 201- 925- 2716

COMING EVENTS

OCT. 2-4; Elkridge, MD: Paul Desautels Micromount Symposium; Baltimore Mineral Society; MHA Conference Center, 6820 Deerpath Rd.; Fri. 7-9:30, Sat. 8-9:30, Sun. 8-1; adults \$25; Micromounters Hall of Fame ceremonies; contact Cal Pierson; e-mail: calpierson2@hotmail.com;

Oct. 3-4--Newark, NY: 16th Annual Wayne Co. Jewelry, Gem, Mineral, Fossil Show and Sale; St. Michael's School PTO, American Hobby Shop; St. Michael's School, 320 Main St.; Sat. 10-5, Sun. 10-4; adults \$3, children under 12 free; jewelry, fossils, exhibits, Fowler's wire wrapping, minerals, grab bags, door prizes, children's activities, club displays; contact Andrea and David Kords, (315) 986-1171;

Oct. 16-18--Philadelphia, PA: Show, "The Philadelphia Gem Jewelry and Gift Show"; Gem Show Expo Productions; 3417 Spruce St.; Fri. 12-5, Sat. 10-6, Sun. 10-5; adults \$3, children free with adult; gems, jewelry, contact Nicholas, P.O. Box 412, Skippack, PA 19474, 484-269-0406;

e-mail: info@gemshowexpo.com;

Oct. 17: Mountainside, NJ: Formerly the Fanwood Show. Sponsored by the NJ Mineralogical Soc. & Trailside Nature & Science Center. From 9am to 5pm.

Oct. 17-18: Bristol, CT: 37th Annual Show/EFMLS Annual Convention; Bristol Gem & Mineral Club; Beals Community Center, 240 Stafford Ave.; Sat. 9:30-5, Sun. 10-4; adults \$5, seniors \$4, children under 12 free; gems, jewelry, mineral specimens, crystals, hands-on educational exhibits, grand door prize, free children's games and activities; contact Dave Korzendorfer, W. Simsbury, CT 06092, 860-651-9980; e-mail: Bristolgem@hotmail.com;

Oct. 24-25--Freeport, NY: Show; Village of Freeport; Freeport Recreation Center, 130 E. Merrick Rd.; Sat. 10-5, Sun. 10-5; adults \$5, children under 12 free; contact Ralph Gose, P.O. Box 1418, Melville, NY 11747, (631) 271-8411; e-mail: kaleidoscopegemshows@yahoo.com\

Oct. 24-25: Henrietta, NY 37th Annual Show, "Rochester Gem, Mineral, Jewelry & Fossil Show"; Rochester Academy of Science Mineral Section, Rochester Lapidary Soc. Minett Hall, Monroe County Fair & Expo Center, corner of E. Henrietta Rd. and Calkins Rd.; Sat. 10-6, Sun. 10-5; dealers, jewelry, minerals, fossils, demonstrations, gemstone faceting, abochon making, jewelry making, member displays, minerals, fossils, jewelry, door prizes, kids' activities, soapstone carving, mineral bingo; contact Paul Dudley, Pittsford, NY 14534, (585) 385-2368

Nov. 7-8--New York, NY: Fall Show; NY Mineralogical Club; Holiday Inn Midtown, 440 W. 57th St., between 9th Ave. and 10th Ave.; Sat. 10-6, Sun. 11-5; adults \$6, children under 12 free; lectures, mineral specimens, fossils, faceted stones, finished jewelry; contact Excalibur Mineral (914) 739-1134;